



10/7 Chester Street EPPING NSW

2 1 1

Enviably positioned within Epping's dynamic commuting shopping and dining precinct, this fully renovated unit promises complete lifestyle ease on the convenient ground floor of a low-rise boutique complex. Double brick, full of natural light and looking out to lovely established gardens, it offers desirable accessibility and low-upkeep appeal for starters, downsizers or investors, within approx. 500m from Epping station and zoned for highly sought-after schools.

- Double-brick apartment on the top floor offering comfort and sun light
- Two spacious bedrooms, master bedroom featuring a built-in wardrobe
- Renovated bathroom and kitchen
- Floorboards throughout

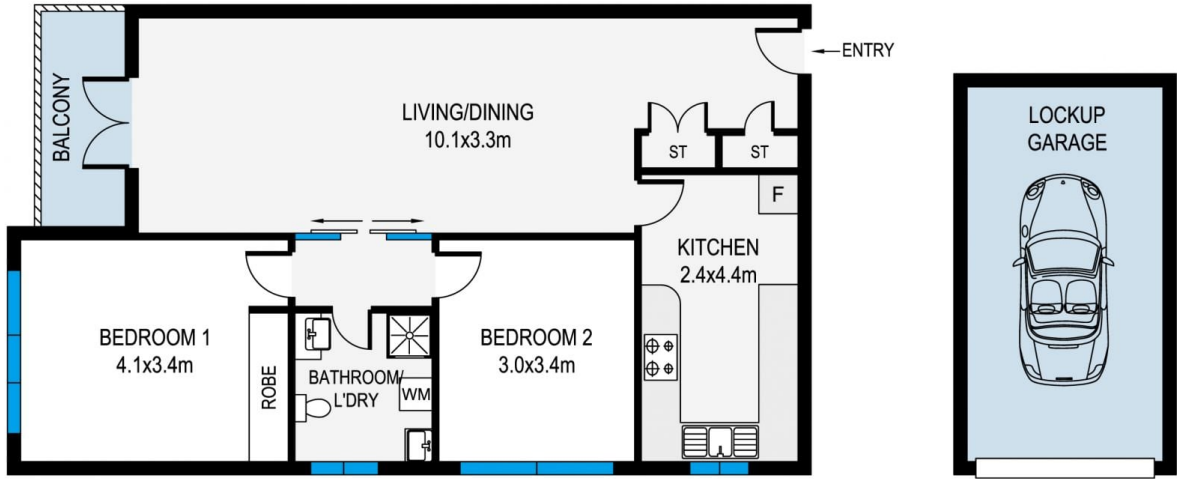
[For full version visit the website](#)

Type : Apartment
Price : \$ 758,000
Building Size : 89 sqm
Land Size : 105 sqm
View : <https://www.jami.com.au/sale/nsw/north-ern-suburbs/epping/residential/apartmen-t/8469254>



Jimmy Pan
0415 525 225

Eric (Jiaxi) Wu
0451 920 717



MEASUREMENTS ARE APPROXIMATE. NOT TO SCALE. ILLUSTRATIVE PURPOSES ONLY. WE DO NOT TAKE ANY RESPONSIBILITY FOR ANY INFORMATION SUPPLIED.

10/7 Chester Street, Epping



JAMI REAL ESTATE