



174 Hezlett Road NORTH KELLYVILLE NSW

4 3 2

Spacious double storey house at North Kellyville offers homes for living that boast the stunning beauty of the blue mountains as a backdrop.

Set on a 240 sqm block, this property combines modern comforts with thoughtful & functional design with desirable street appeal. Sun-drenched throughout, it presents a perfect blend of warmth, elegance and modern luxury, ideal for growing families.

Just a short drive from a range of schools, local shops and major shopping centres, these include North Kellyville Center, Stanhope Gardens Leisure Centre, Rouse Hill Shopping Centre, Castle Towers, Parklea Markets and Norwest Marketown, and more.

Main Features:

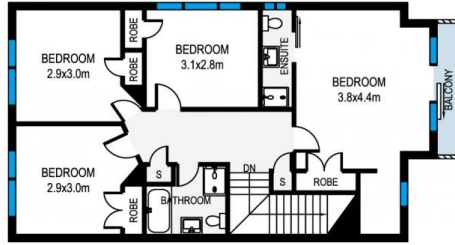
[For full version visit the website](https://www.jami.com.au)

Type : House
Price : Auction
Building Size : 170 sqm
Land Size : 240 sqm
View : <https://www.jami.com.au/sale/nsw/hills/north-kellyville/residential/house/8276841>

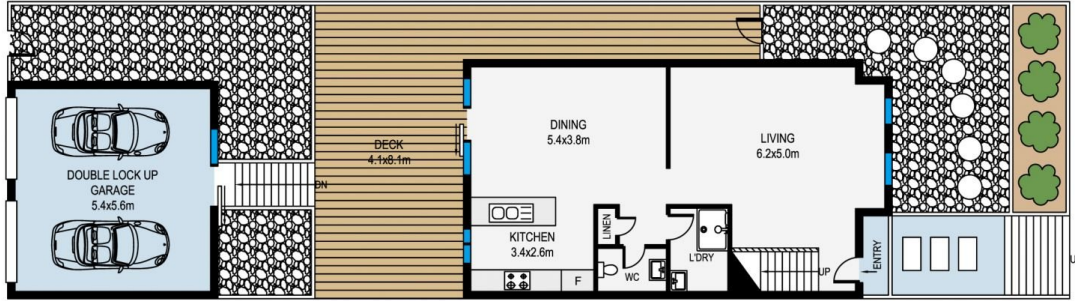


Gimmy Pan
0415 535 235

Eric (Jiaxi) Wu
0451 020 717



UPPER LEVEL



GROUND LEVEL

Internal: 137 sqm
 Balcony: 2 sqm
 Garage: 30 sqm
 Deck: 45 sqm
 Total Area: 214 sqm



MEASUREMENTS ARE APPROXIMATE. NOT TO SCALE. ILLUSTRATIVE PURPOSES ONLY. WE DO NOT TAKE ANY RESPONSIBILITY FOR ANY INFORMATION SUPPLIED.

174 Hezlett Road, North Kellyville

