



## 111 Carlingford Road EPPING NSW

5 🛏 3 🚿 2 🚗

This stunning 5 bedroom duplex is the epitome of contemporary living in the sought-after suburb of Epping. With its prime location on Carlingford Road, the property offers the perfect blend of style, space, and convenience. This home is perfect for growing families or those who love to entertain.

With close proximity to the bustling hubs of Carlingford, Epping and Eastwood, you'll be spoiled for choice with a variety of vibrant restaurants, cafés, Asian grocery stores, and supermarkets. A 5-minute drive takes you to the train station for fast trips to the CBD.

### Main Features:

- Immersive living spaces awash with light
- 5 deluxe bedrooms with two master with ensuite

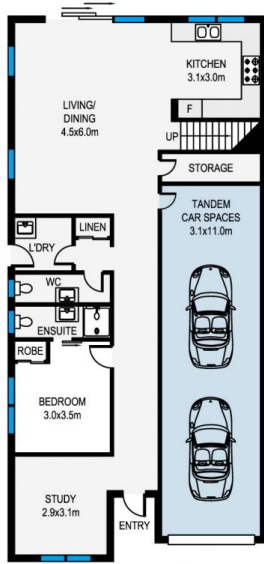
[For full version visit the website](#)

**Type** : Semi Detached  
**Price** : For Sale - \$2,250,000  
**Building Size** : 226 sqm  
**Land Size** : 379 sqm  
**View** : <https://www.jami.com.au/sale/nsw/north-ern-suburbs/epping/residential/semi-detached/8253962>

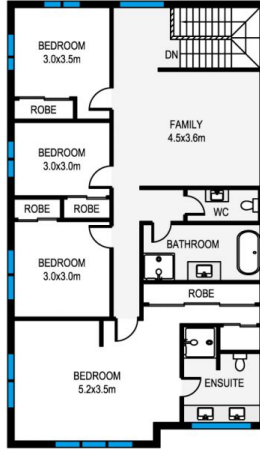


**Jimmy Pan**  
0415 525 225

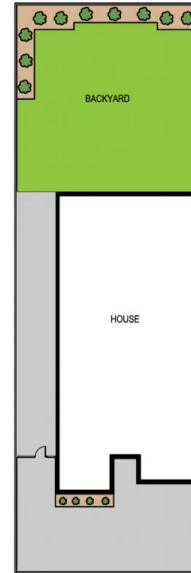
**Jack (Jia Jie) Xu**  
0400 883 737



GROUND FLOOR



FIRST FLOOR



SITE PLAN



Internal: 226 sqm

MEASUREMENTS ARE APPROXIMATE. NOT TO SCALE. ILLUSTRATIVE PURPOSES ONLY. WE DO NOT TAKE ANY RESPONSIBILITY FOR ANY INFORMATION SUPPLIED.

111 Carlingford Road, Epping



JAMI REAL ESTATE