

## G87/37 Rothschild Avenue ROSEBERY NSW

4 🛏 3 🚿 2 🚗

Presented by Meriton, an award-winning developer renowned for quality and design, Our Modern Spacious townhouse provides an unparalleled experience of luxurious and roomy living. Ideally situated just steps away from Green Square's Gunyama Park and Aquatic Centre, and nestled within the trendy hub of Rosebery, this residence is conveniently located only 4km from Sydney's CBD.

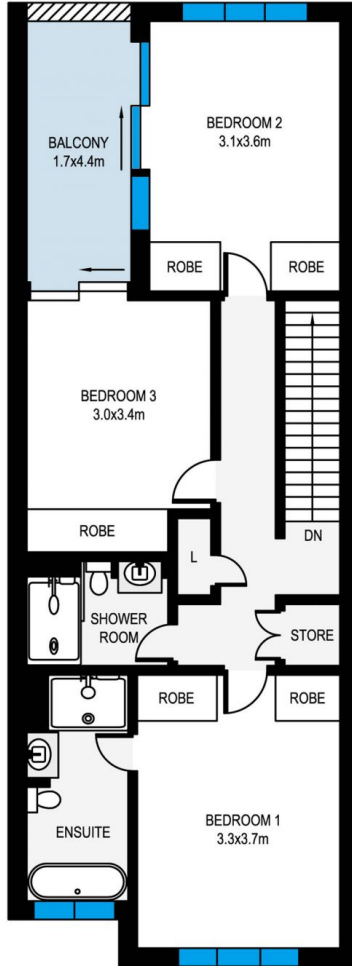
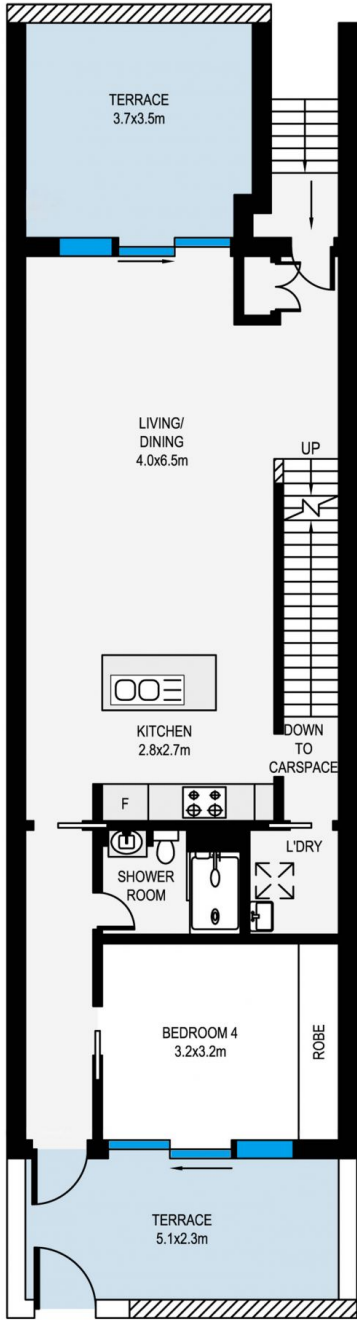
Large townhouse with the convenience of an onsite Woolworths supermarket and other retail options, professionally managed by dedicated onsite building staff. Residents can enjoy a fully equipped gym, an indoor aquatic center featuring a heated pool, spa, and sauna, as well as beautifully landscaped podium gardens and

**Type** : Townhouse  
**Building Size** : 172 sqm  
**Land Size** : 202 sqm  
**View** : <https://www.jami.com.au/lease/nsw/eastern-suburbs/rosebery/residential/townhouse/8190110>

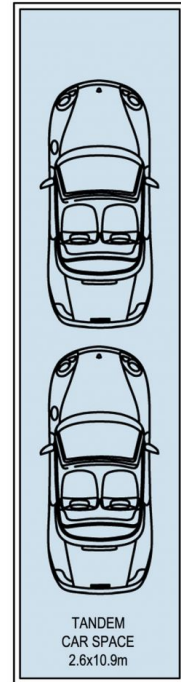


**Jane Lin**  
**0434 350 542**

[For full version visit the website](#)



STORAGE CAGE  
1.9x1.0m



MEASUREMENTS ARE APPROXIMATE. NOT TO SCALE. ILLUSTRATIVE PURPOSES ONLY. WE DO NOT TAKE ANY RESPONSIBILITY FOR ANY INFORMATION SUPPLIED.

G87/37 Rothschild Avenue, Rosebery



JAMI REAL ESTATE