



320/2-8 Hazlewood Place Epping NSW

2 2 1

Positioned on level 3 with spacious entertainers balcony, this oversized two bedroom apartment combines convenience with premier resort style amenities and 10 mins Walking Distance to Epping Train Station/Metro for transportation.

Building Size : 100 sqm
View : <https://www.jami.com.au/lease/nsw/north-hern-suburbs/epping/residential/apartment/7799697>

Walking distance to Carlingford Court Shopping Centre for cafes, boutique shops and restaurants.

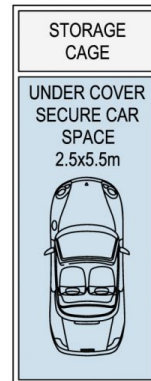
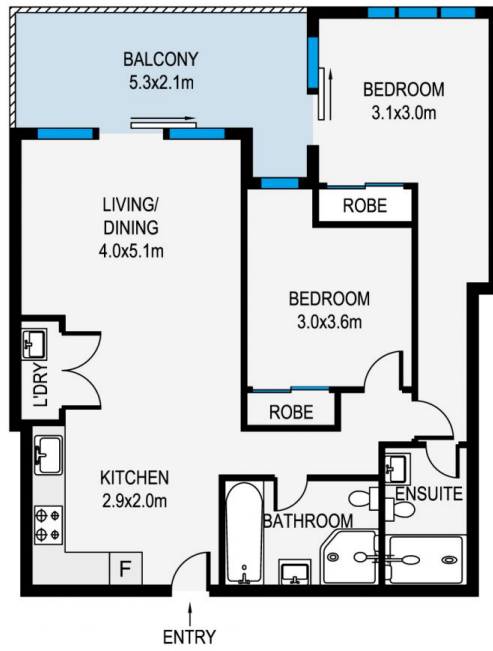
The property is located in the Epping Heights Public catchment and with a choice of elite schools within the area. (Epping Boys, Cheltenham Girls, Carlingford)

Property Features:

- Combined lounge/dining with sun-drenched balcony
- Two modern bathrooms, bedrooms with built-in wardrobes



Jane Lin
02 8776 8707



MEASUREMENTS ARE APPROXIMATE. NOT TO SCALE. ILLUSTRATIVE PURPOSES ONLY. WE DO NOT TAKE ANY RESPONSIBILITY FOR ANY INFORMATION SUPPLIED.

320/2 Hazlewood Place, Epping



JAMI REAL ESTATE