



34/3 Defries Avenue Zetland NSW

2 2 1

Discover a light-filled contemporary haven that rests away from the road enjoying tranquil vistas over the central courtyard and a superbly designed, generous floor plan. Perfectly positioned to enjoy a vibrant Victoria Park lifestyle, its sweeping design incorporates private bedroom suites, a generous living zone and a full width balcony.

Type : Apartment
View : <https://www.jami.com.au/lease/nsw/eastern-suburbs/zetland/residential/apartment/7796826>

Main Features:

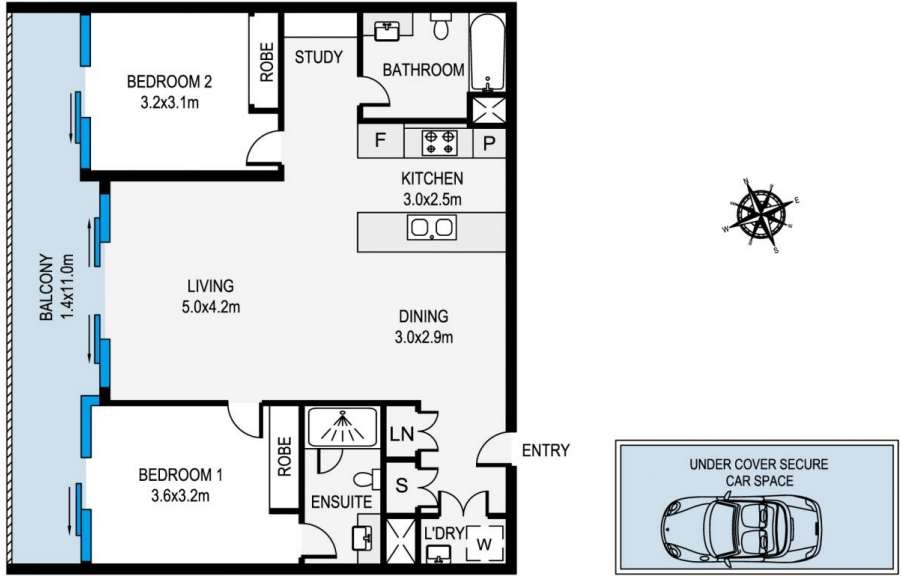
- Timber Floor Throughout
- Fully Furnished
- Internet Bills Included
- 5th floor setting, security building with dual lift access
- Excellent natural light
- Superbly proportioned and open plan living and dining



Jane Lin
0434 350 542

Gimmy Pan
0415 535 235

[For full version visit the website](#)



MEASUREMENTS ARE APPROXIMATE. NOT TO SCALE. ILLUSTRATIVE PURPOSES ONLY. WE DO NOT TAKE ANY RESPONSIBILITY FOR ANY INFORMATION SUPPLIED.

34/3 Defries Avenue, Zetland



JAMI REAL ESTATE