



4 Grattan Road North Kellyville NSW

4 2 2

Spacious double storey house at Kellyville offers homes for living that boast the stunning beauty of The Blue Mountains as a backdrop, just a short drive from a range of pre-schools and schools, local shops and major shopping centres.

These include Stanhope Gardens Leisure Centre Rouse Hill Shopping Centre, Castle Towers, Parklea Markets and Norwest Marketown, and more.

Sun-drenched throughout, this home presents a perfect blend of warmth, elegance and modern luxury, ideal for growing families.

Other features that are sure to impress:

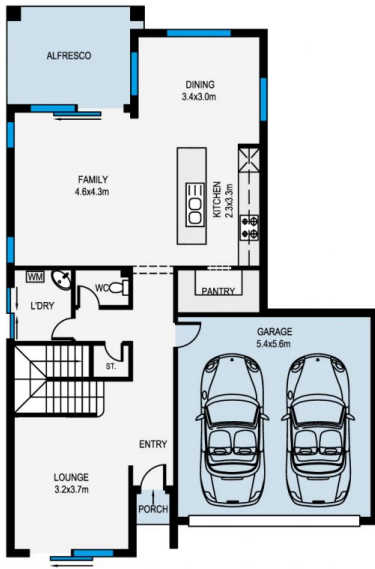
- Newly renovated timber flooring
- Double lock-up garage with internal access

Building Size : 222 sqm
Land Size : 394 sqm
View : <https://www.jami.com.au/sale/nsw/hills/north-kellyville/residential/house/7785211>

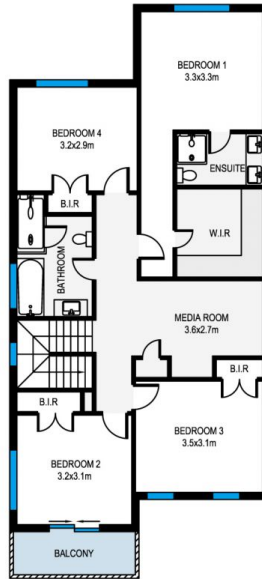


Gimmy Pan
02 8776 8707

Jane Lin
02 8776 8707



GROUND FLOOR



FIRST FLOOR



SITE PLAN (NOT TO SCALE)



MEASUREMENTS ARE APPROXIMATE. NOT TO SCALE. ILLUSTRATIVE PURPOSES ONLY. WE DO NOT TAKE ANY RESPONSIBILITY FOR ANY INFORMATION SUPPLIED.

4 Grattan Road, North Kellyville



JAMI REAL ESTATE