



## 108/1 Stedman Street Rosebery NSW

2 2 1

This generous apartment in The Gallery - Mint Collection, benefits from a peaceful elevated position with two balconies and just one common wall.

A modern design offers a combined lounge/dining/kitchen, flowing out to a sizeable north-facing balcony with leafy urban views. One of the two bedrooms opens onto the balcony, while the master has the luxury of access to a second private outdoor area.

located only 50m from city buses, 150m to Woolworth, 400m to Gunyama Park Aquatic and Recreational Centre, 900m to Green Square Station, 1km to Australian Golf Club, 1.2 km to East Village Shopping Centre, and 5 km from Sydney CBD.

Main Features Include

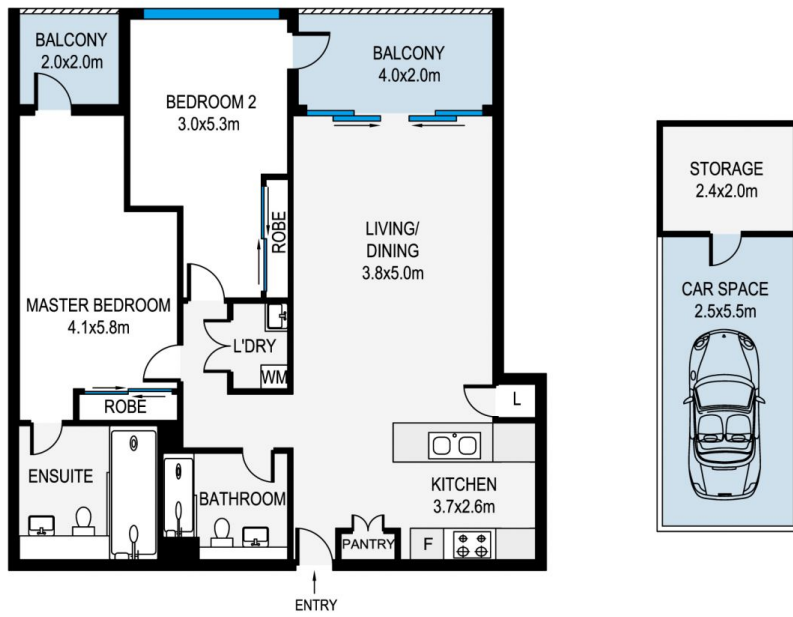
**Price** : \$ 950,000  
**Building Size** : 90 sqm  
**View** : <https://www.jami.com.au/sale/nsw/eastern-suburbs/rosebery/residential/apartment/7777783>



**Jane Lin**  
02 8776 8707



**Gimmy Pan**  
02 8776 8707



MEASUREMENTS ARE APPROXIMATE. NOT TO SCALE. ILLUSTRATIVE PURPOSES ONLY. WE DO NOT TAKE ANY RESPONSIBILITY FOR ANY INFORMATION SUPPLIED.

108/1 Stedman Street, Rosebury



2



2



1

JAMI REAL ESTATE