



1509/13 Verona Drive Wentworth Point NSW

2 2 1

Sit back and enjoy sweeping views spanning across Olympic Park to Parramatta's skyline. Positioned in a corner position on level 15 and all bedrooms facing the north, it's perfect for those who are looking for modern stylish living and ultimate convenience just minutes from shops, schools and public transport.

Price : \$ 765,000

View : <https://www.jami.com.au/sale/nsw/inner-west/wentworth-point/residential/apartment/7453301>

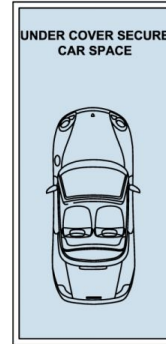
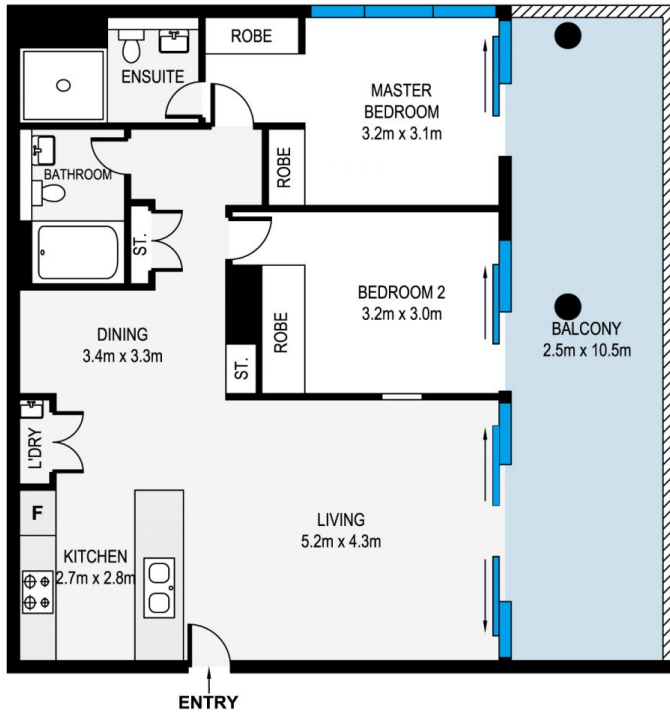
Main Features:

- Floor to ceiling windows in living and bedrooms area offers serene parkland views
- Wrap around windows welcome an abundance of natural light
- Covered balcony with 27m2 in total perfect for year-round entertaining
- Chic and modern gas kitchen with stainless steel appliances



Jane Lin
02 8776 8707

Gimmy Pan
02 8776 8707



Internal: 80 sqm
 Balcony: 26 sqm
 Car Space: 14 sqm
 Storage: 3 sqm
 Total Area: 123 sqm



MEASUREMENTS ARE APPROXIMATE. NOT TO SCALE. ILLUSTRATIVE PURPOSES ONLY. WE DO NOT TAKE ANY RESPONSIBILITY FOR ANY INFORMATION SUPPLIED.

1509/13 Verona Drive, Wentworth Point



JAMI REAL ESTATE