



25/12-18 Lane Cove Road Ryde NSW

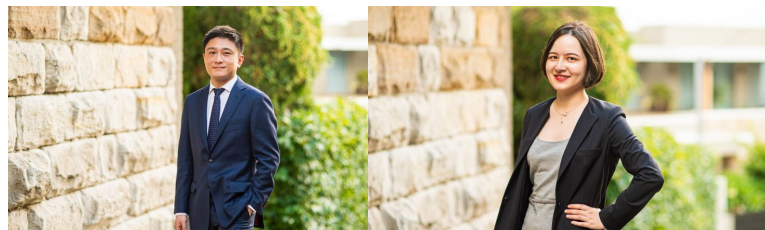
2 1 1

This newly renovated 2-bedroom unit had timber flooring installed with freshly painting and ready for you to move straight in.

View : <https://www.jami.com.au/lease/nsw/northern-suburbs/ryde/residential/apartment/7315475>

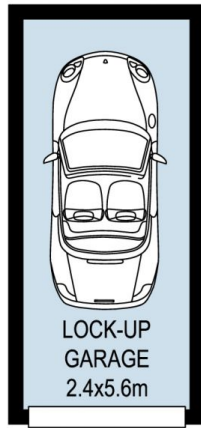
- ? Bright interiors with a good sense of space
- ? Large L-shaped lounge/dining leading out onto the balcony
- ? Updated kitchen has stone benchtops, and ample cupboards
- ? Two double bedrooms, master with built-in
- ? Bathroom with separate shower and bathtub
- ? Separate laundry
- ? Locked-up Garage with car space
- ? Well-maintained low-rise building
- ? Close to city transport and Top Ryde Shopping Centre

Please contact Gimmy Pan on 0415 535 235 for inspection.

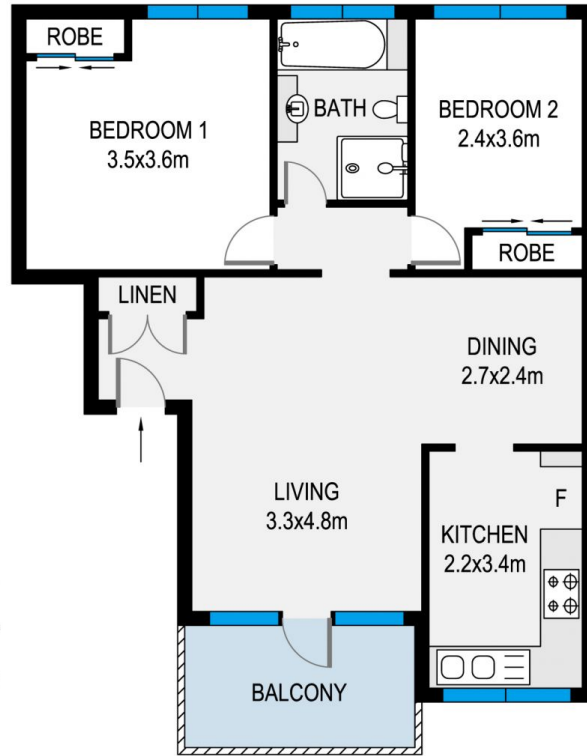
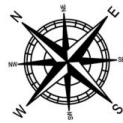


Gimmy Pan
02 8776 8707

Jane Lin
02 8776 8707



Internal: 63 sqm
Balcony: 9 sqm
Garage: 13 sqm
Laundry: 2 sqm
Total Area: 87 sqm



MEASUREMENTS ARE APPROXIMATE. NOT TO SCALE. ILLUSTRATIVE PURPOSES ONLY. WE DO NOT TAKE ANY RESPONSIBILITY FOR ANY INFORMATION SUPPLIED.

25/12-18 Lane Cove Road, Ryde

