



1204/6-10 Charles Street Parramatta NSW

2 🛏 2 🚿 1 🚗

Located in the heart of the Parramatta CBD with spectacular views of Sydney's city skyline, this spacious and modern apartment situated on the 12th level offers the ultimate lifestyle experience.

Footsteps to Parramatta railway station, River cat ferry, bus interchange hub, newly proposed Light Rail & Parramatta aquatic and leisure centre. The Parramatta Public School and Arthur Philip High School are just across the road and only a short stroll to Parramatta Westfield and famous restaurants & cafes.

Main features:

- Spacious open plan living and dining areas
- Caesarstone kitchen with quality appliances
- Private alfresco balcony, all weather shutters with views of Sydney's city skyline
- Two generous bedrooms with built-ins, main with ensuite.

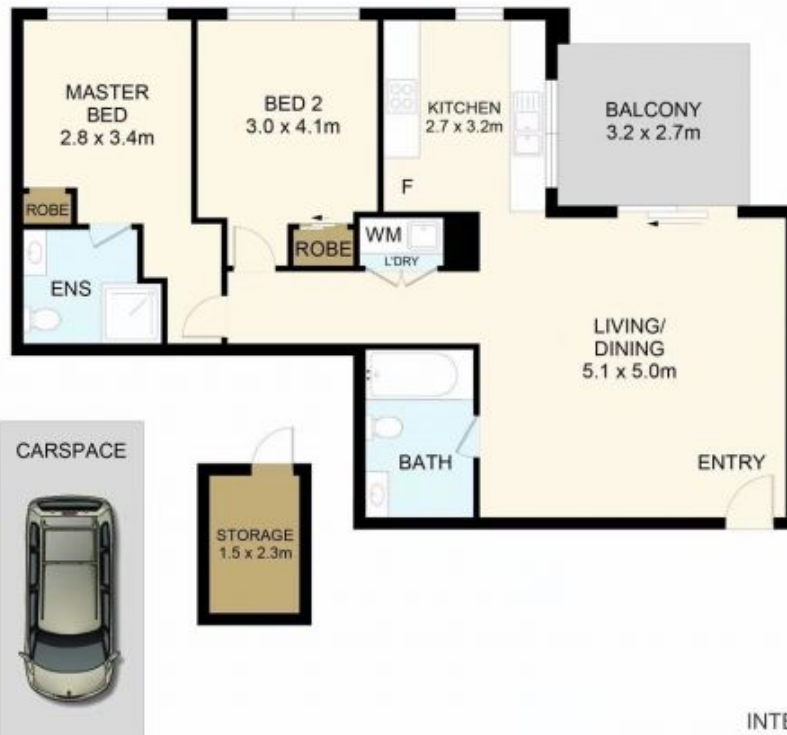
Building Size : 76 sqm

View : <https://www.jami.com.au/lease/nsw/parramatta/parramatta/residential/apartment/6945672>



Jimmy Pan
02 8776 8707

Jane Lin
02 8776 8707



INTERNAL	76 SQM
BALCONY	9 SQM
TOTAL	85 SQM

DISCLAIMER: THIS IS FOR ILLUSTRATIVE PURPOSES ONLY. ALL DIMENSIONS ARE APPROXIMATE AND IT DOES NOT CONSTITUTE PART OF ANY LEGAL DOCUMENTS.

ADDRESS:

1204/6-10 Charles Street, Parramatta