

6056/2E Porter Street RYDE NSW

1 1 1

Experience the quiet and leisure lifestyle in Waterside of Ryde and Meadowbank

This one bedroom apartment located in the most spectacular area of Ryde, it makes your life easier by offering minutes within walking distance to Meadowbank Train Station, Bus Stops as well as Ferry Stations to access the Top Ryde & Rhodes Shopping Centres and Anderson Park.

Come and explore the modern lifestyle in this safe and pleasant place.

Key features:

[For full version visit the website](https://www.jami.com.au)

Type : Apartment

View : <https://www.jami.com.au/lease/nsw/northern-suburbs/ryde/residential/apartment/6407975>



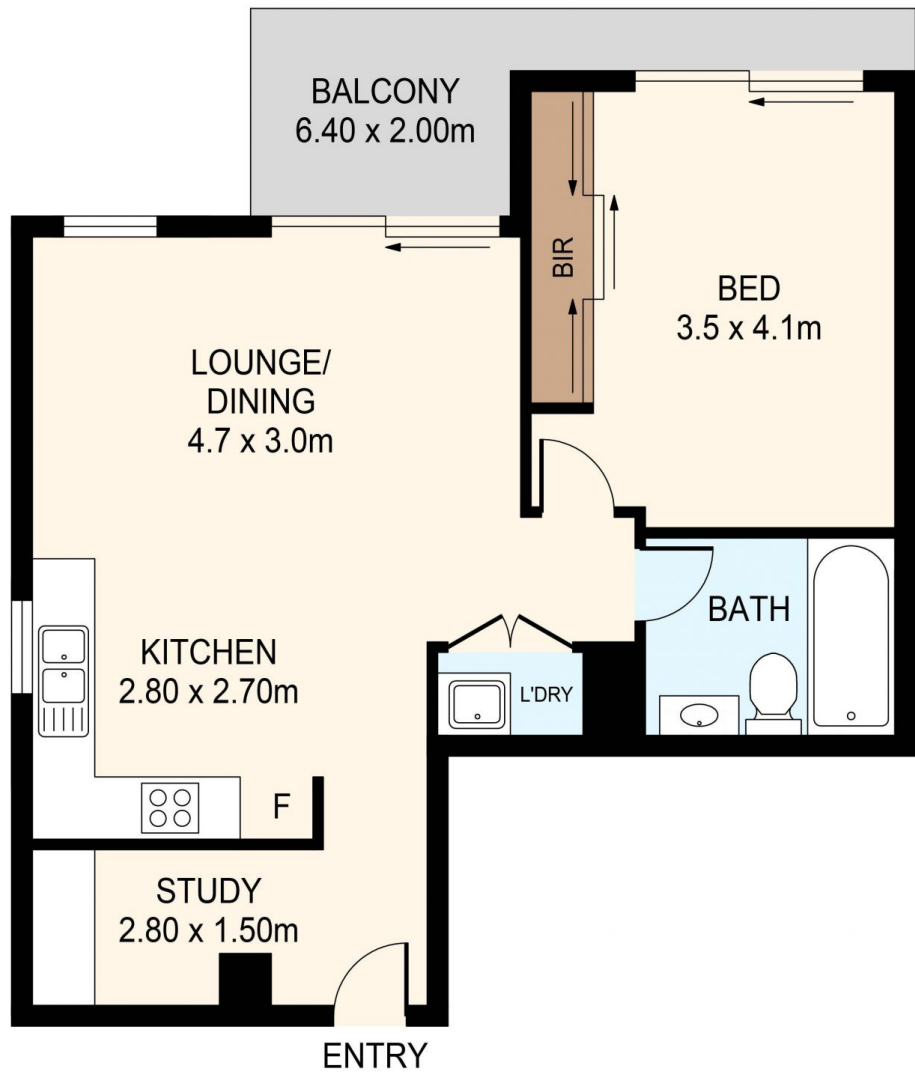
Gimmy Pan
0415 535 235

Jane Lin
0434 350 542

CAR SPACE



STORAGE
1.5 X 2.5



DISCLAIMER: THIS IS FOR ILLUSTRATIVE PURPOSES ONLY.
ALL DIMENSIONS ARE APPROXIMATE AND IT DOES NOT
CONSTITUTE PART OF ANY LEGAL DOCUMENTS.

ADDRESS:

6056/2E PORTER STREET, RYDE